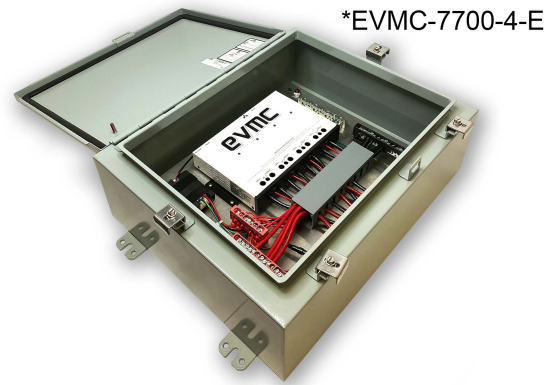


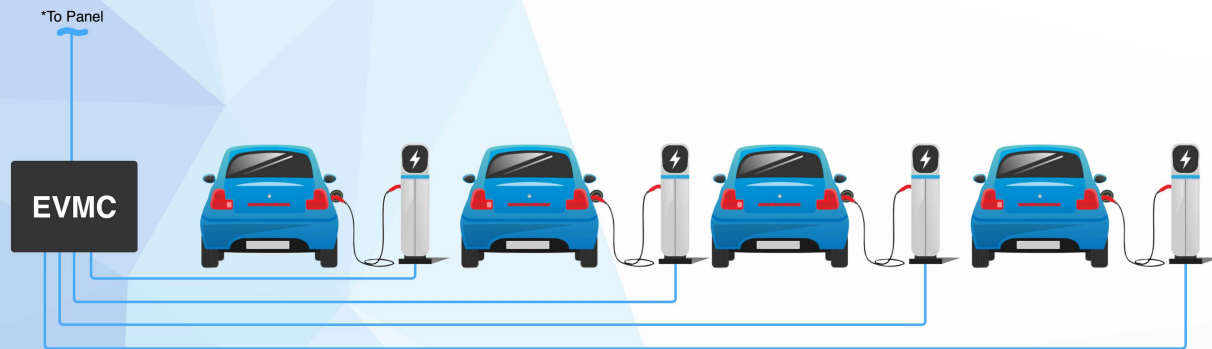


The CS-EVMC (Electric Vehicle Master Controller)



Cyber Switching is introducing a new solution for installing EV Chargers called the EV Master Controller (EVMC). The EVMC enables the installation of EV Chargers in low electrical infrastructure capacity buildings and sites.

The EVMC is designed to work with any non-networked charging stations, adding efficient power management that allows for the cost-effective deployment of EV charging stations in any environment. Cyber Switching is optimizing the conventional approach known as the 'one to one' solution by more consistently utilizing the single line, and rotating its power amongst 4 charging stations. This adds the ability to install 4 charging stations with out the costly upgrades that may be needed for electrical



The Key Benefits of EVMC:

- **Works with your current infrastructure**
(requires less required infrastructure to support EV)
- **Easy to install**
(A device made by electricians for electricians)
- **Up to 30% Cheaper than leading solutions**
(compared to other leading solutions our price is always the lowest)
- **Lowers monthly bills**
(Utility bills are significantly reduced as well as the impact of on peak demand power usage.)
- **No internet, no problem**
(The EVMC works with or without a networked connection)

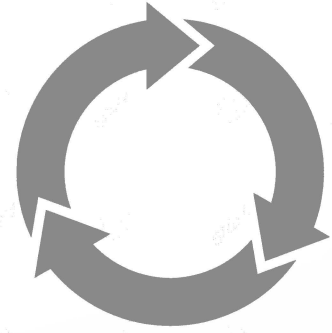




A Closer Look at the EVMC

Rotational charging + Priority Features:

- Rotates the power from vehicle to vehicle on a programmable basis, allowing power to be shared with several vehicles
- Polls the charge level of each vehicle and moves on to the next if a car is fully charged
- Prioritize a specific charger to always be first to finish charging



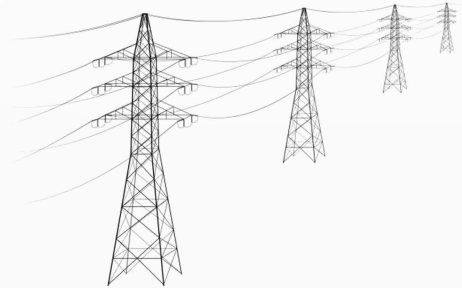
Required Infrastructure Reduction

- Less need for individual circuits
- Less pipe, conduit, wires and circuit breakers
- Possible use of power from existing electrical panels
- Saves energy by not having to produce construction material
- Less greenhouse gases will be produced



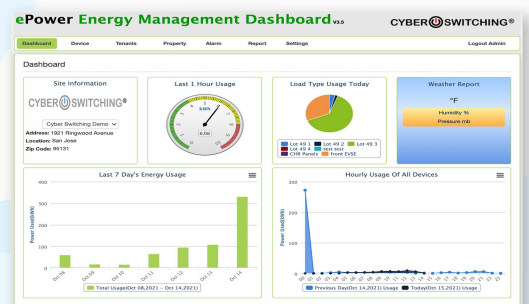
Grid Impact Reduction

- Reduces electricity demand charges
- Decreases peak usage by utilizing power at a consistent more efficient rate



Efficient Software Features:

- Shuts power off when utilities are charging a premium
- Focus on maximum efficiency by always searching for a vehicle to charge
- Run reports and usage data from the cloud dashboard





The CS-EVMC Product Specifications Sheet

Feature	Technical Specification
UL File	PAZX.E206903
Certifications	UL916, Energy Management Equipment CAN/CSA 22.2 No. 205-12, Standard for Signal Equipment
Output Ratings	277 Vac, 30A; 250 Vac 2hp, motor load; 40A/240 Vac
No. Of Stations	4 - 7.7kW to 9.6kW Level 2; 8 - 3.8kW Level 2

